

Home Smart Plug

The Smart Plug stands out as one of the smallest Nemko certified 16A Smart Plugs on the market. Utilizing Zigbee and a pairing button, the introduction of this device into a Smart Home is effortless, covering everything from power consumption reporting to controlling power supply.

The new standard for 16A Smart Plugs

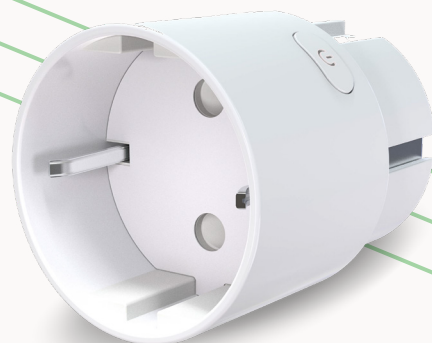
With electronic devices becoming increasingly minimalistic, it is time to look at the next evolution of Smart Plugs. The Smart Plug is a certified 16A relay plug with the size of a small socket adapter and therefore you can have two Smart Plugs in a dual socket.

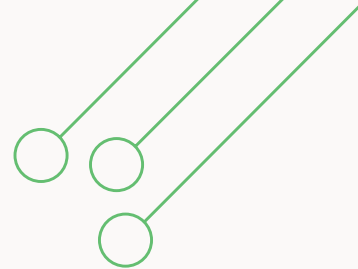
The Smart Plug updates over the air (OTA).

Design customization and branding

It has become evident that design and branding heavily affects the market of electronics. We therefore offer customization of every detail including the color scheme of LED indicators to suit your brand recognition.

Home. Connected.





Specifications

Rating

| | |
|----------------------------|------------------|
| Max load: | 16A/3680W |
| Standby power consumption: | 1.6 W |
| Power supply: | 230V AC, 50/60Hz |

Local Communication Options

| | |
|------------------------------|-----------------------------------|
| Radio Protocol: | Zigbee 3.0, supports HA 2.1 & ZLL |
| Frequency: | 2400-2483,5 MHz (IEEE 802.15.4) |
| Transmission power: | 18dBm |
| Zigbee router functionality: | yes |

Environment

| | |
|-------------------------------|--------------------------------|
| IP Class: | IP20 (Indoor use) |
| Operational temperature: | 0 to +40 °C |
| Shipping/storage temperature: | -20 to +45 °C |
| Humidity range: | 0 to 90% R.H. (non-condensing) |

General

| | |
|--------------------|-------------------------|
| Dimensions: | 41 x 49 (mm) |
| Compatible socket: | CEE 7/4 (Schuko socket) |
| Upgrade method: | OTA (Over The Air) |

Typical use

- On/off control of any electrical device
- Heat control (requires a temp. sensor)
- Countdown timer (0-24 hours)
- Real-time indication of power consumption

Built-in safety

- Cuts power at overload and overheating
- Thermal fuse as extra protection

Compliance

CE (Nemko certified)